



# Map builder - The simplest OSM editorial tool

Nemanja Bračko









**ROAD  
WORK  
AHEAD**







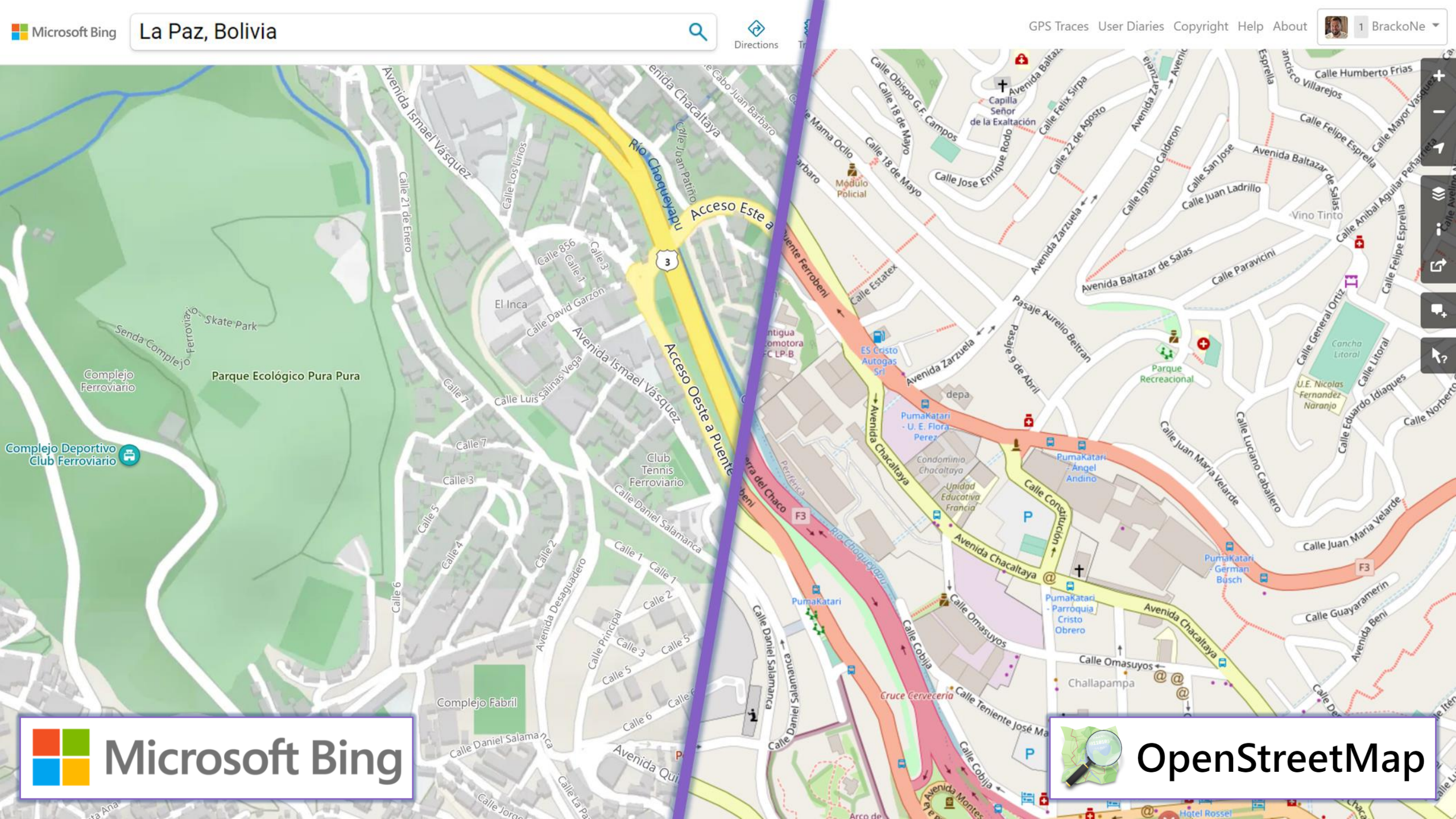


Microsoft

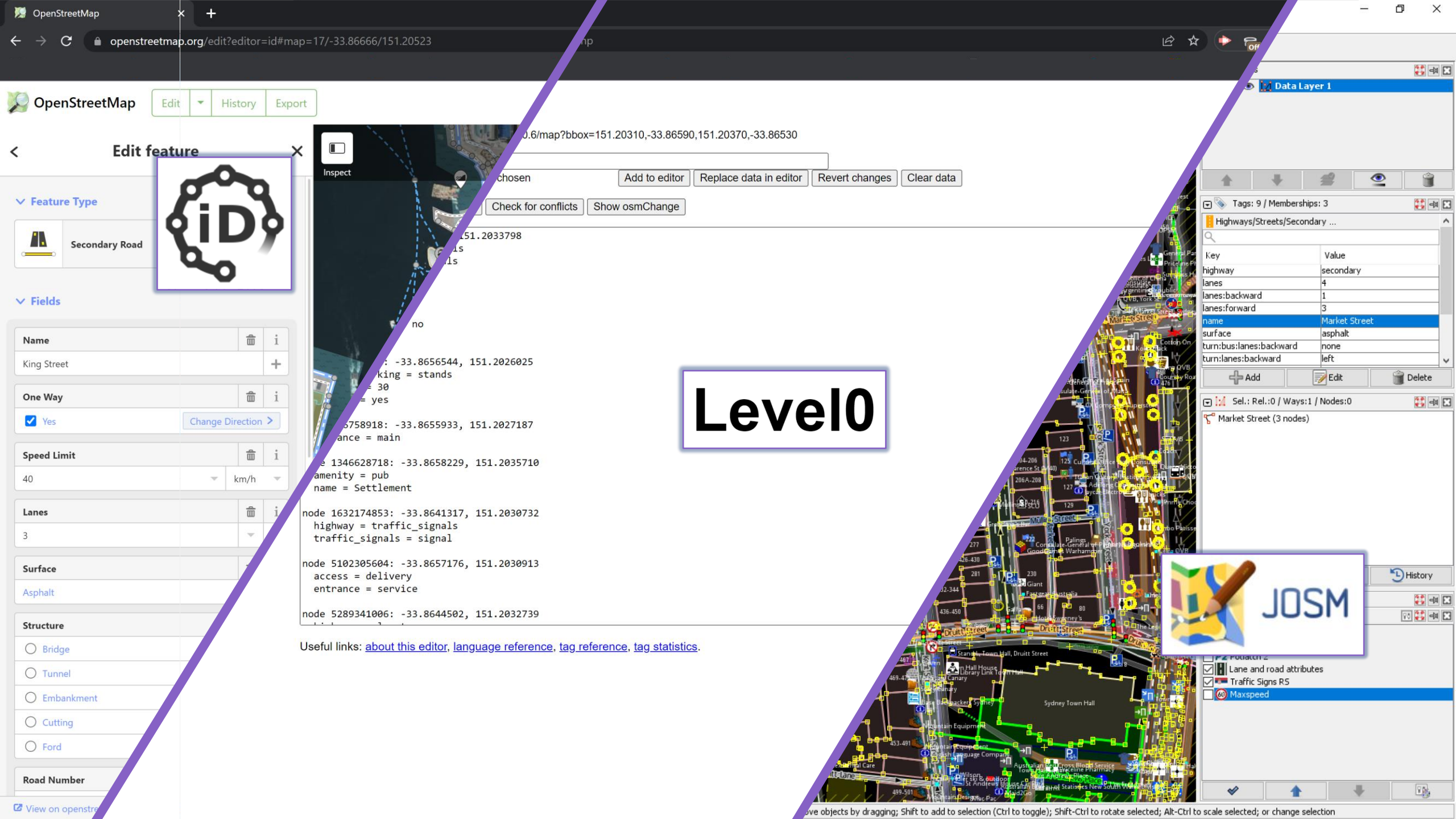
Billion+ users \*









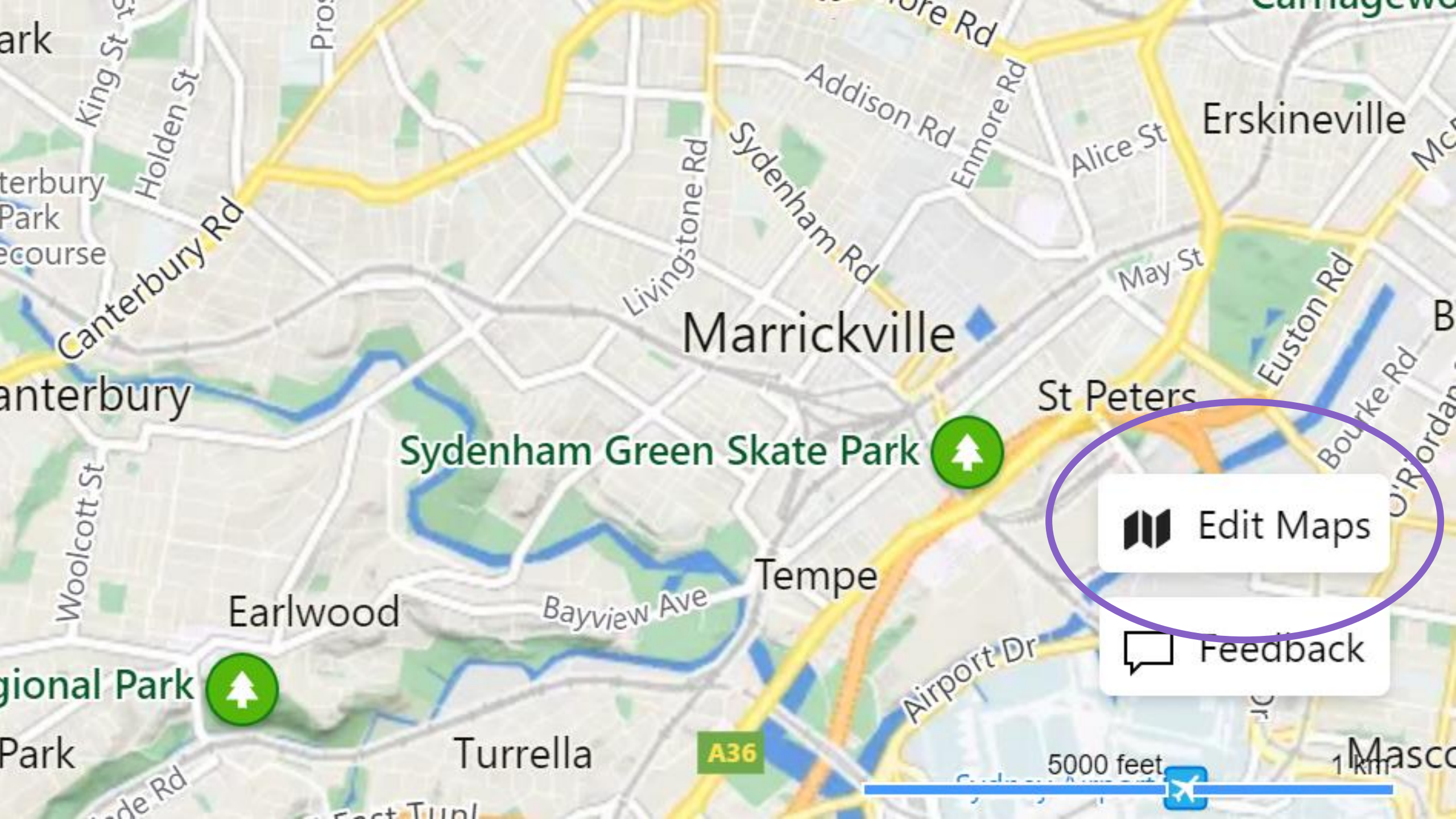


Level0



Useful links: [about this editor](#), [language reference](#), [tag reference](#), [tag statistics](#).





Marrickville

Sydenham Green Skate Park

St Peters

Tempe

Earlowood

Turrella

Erskineville

May St

Euston Rd

Bourke Rd

O'Riordan St

Airport Dr

Bayview Ave

A36

5000 feet

1 km



Edit Maps



Feedback




<

Edit feature

×

Feature Type



Residential Road

i

Fields

Name

Beryl Place

+

One Way

Assumed to be No

Speed Limit

40, 50, 60...

km/h

Lanes

1, 2, 3...

Surface

Paved

Structure

Bridge

Tunnel

Embankment

Cutting

Ford

Allowed Access

All

yes

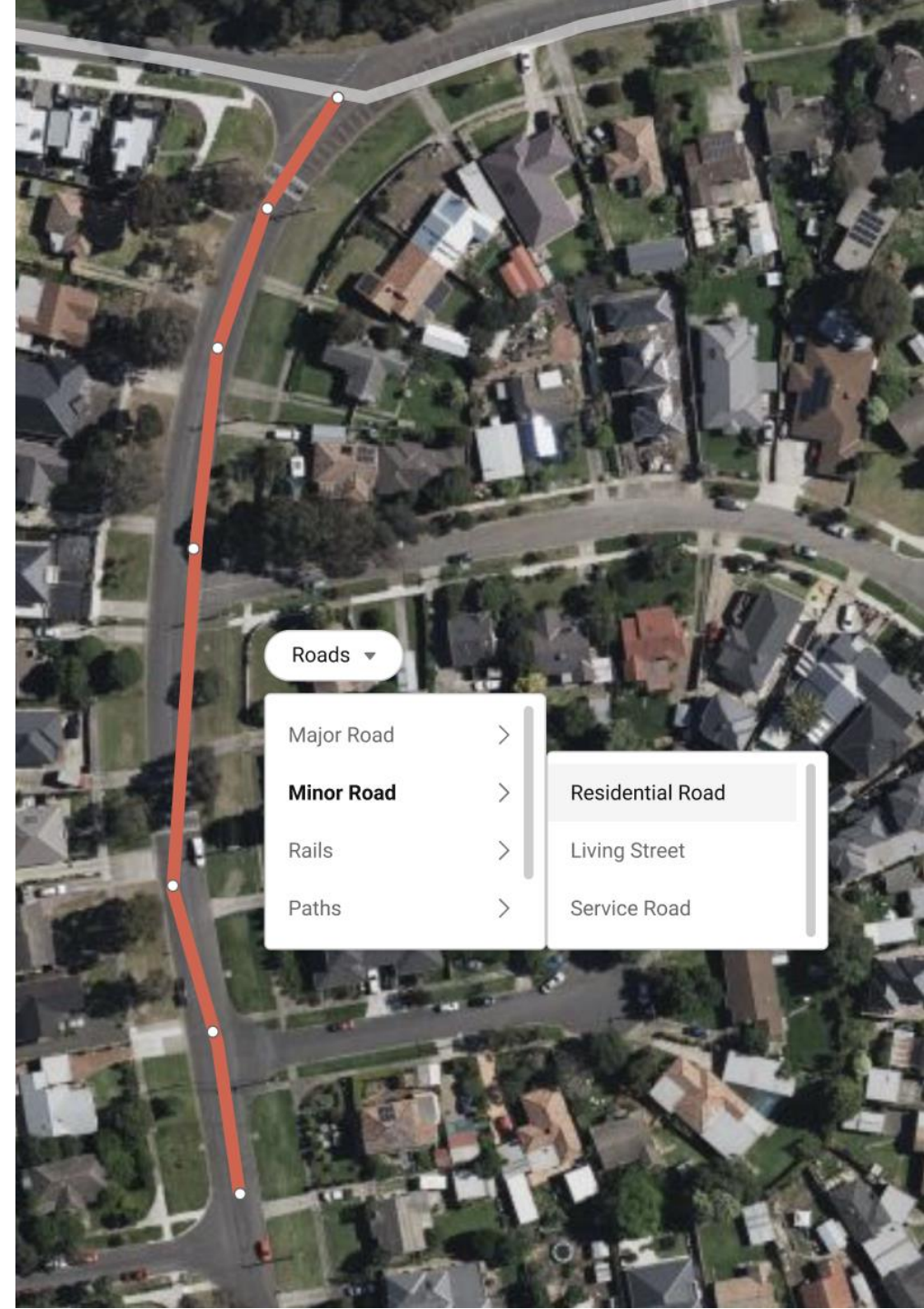
Foot

yes

Motor Vehicles


yes

Simplification is  
the core tenet of  
Map builder  
design





# Guided tutorials help users get started

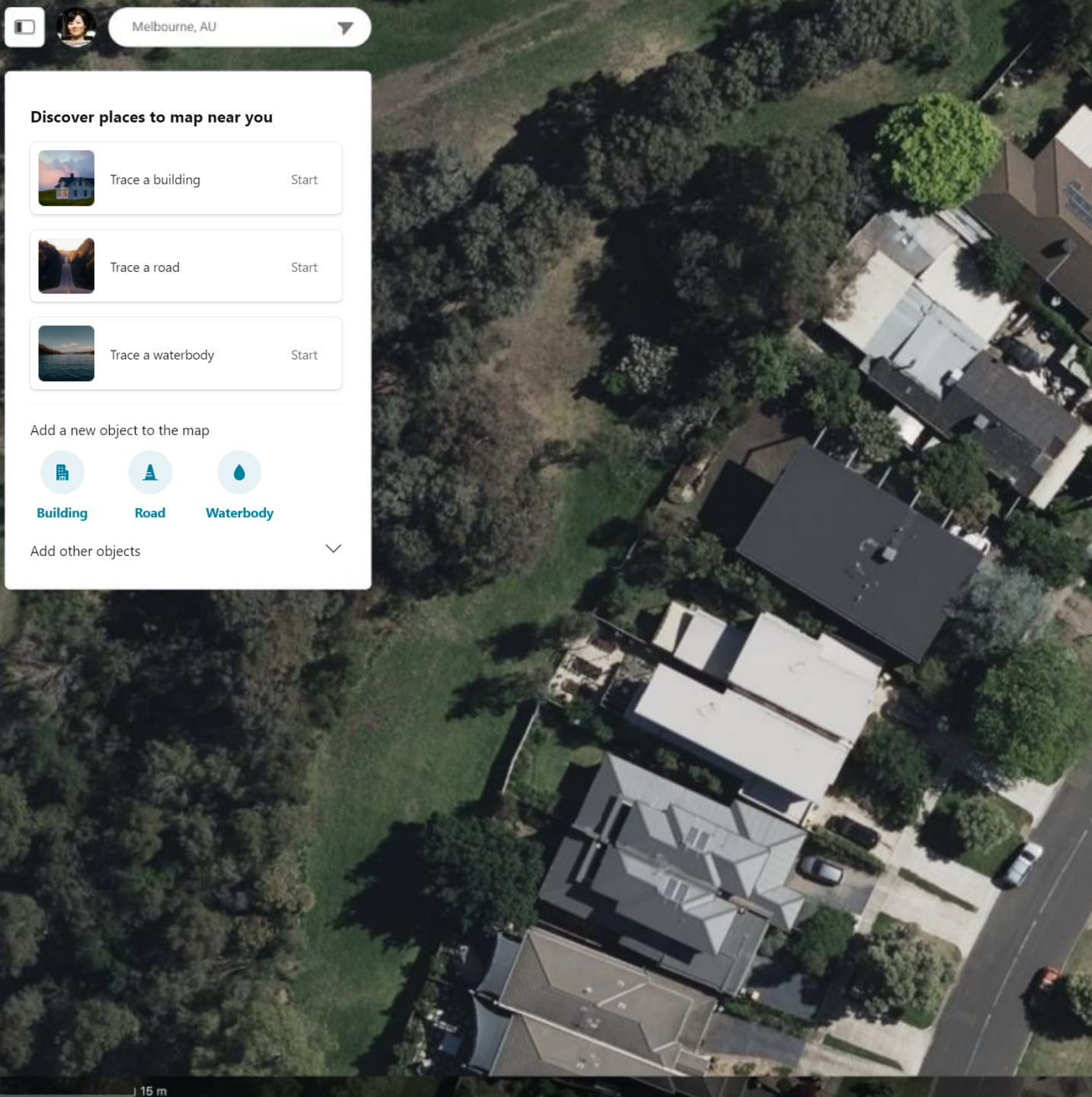
An aerial photograph of a residential street. A pink line is drawn vertically along the left side of the road, starting from the bottom and extending upwards. At the bottom of the pink line, there is a small red circle. A white rectangular box with a black border is positioned to the right of the pink line. The box contains the title "Trace a road" and a paragraph of text. The street is lined with houses that have red-tiled roofs. There are trees and parked cars visible. At the bottom of the image, the text "Smith Street" is visible.

## Trace a road

Click on a road to start tracing and continue placing nodes along the road's shape. Complete the tracing by connecting it to an existing road and double clicking the end point.

Smith Street





Structured guidance  
helps users  
make quality edits  
quickly and easily





Melbourne, AU



### Discover places to map near you



Trace a building

Start



Trace a road

Start



Trace a waterbody

Start

Add a new object to the map



Building



Road



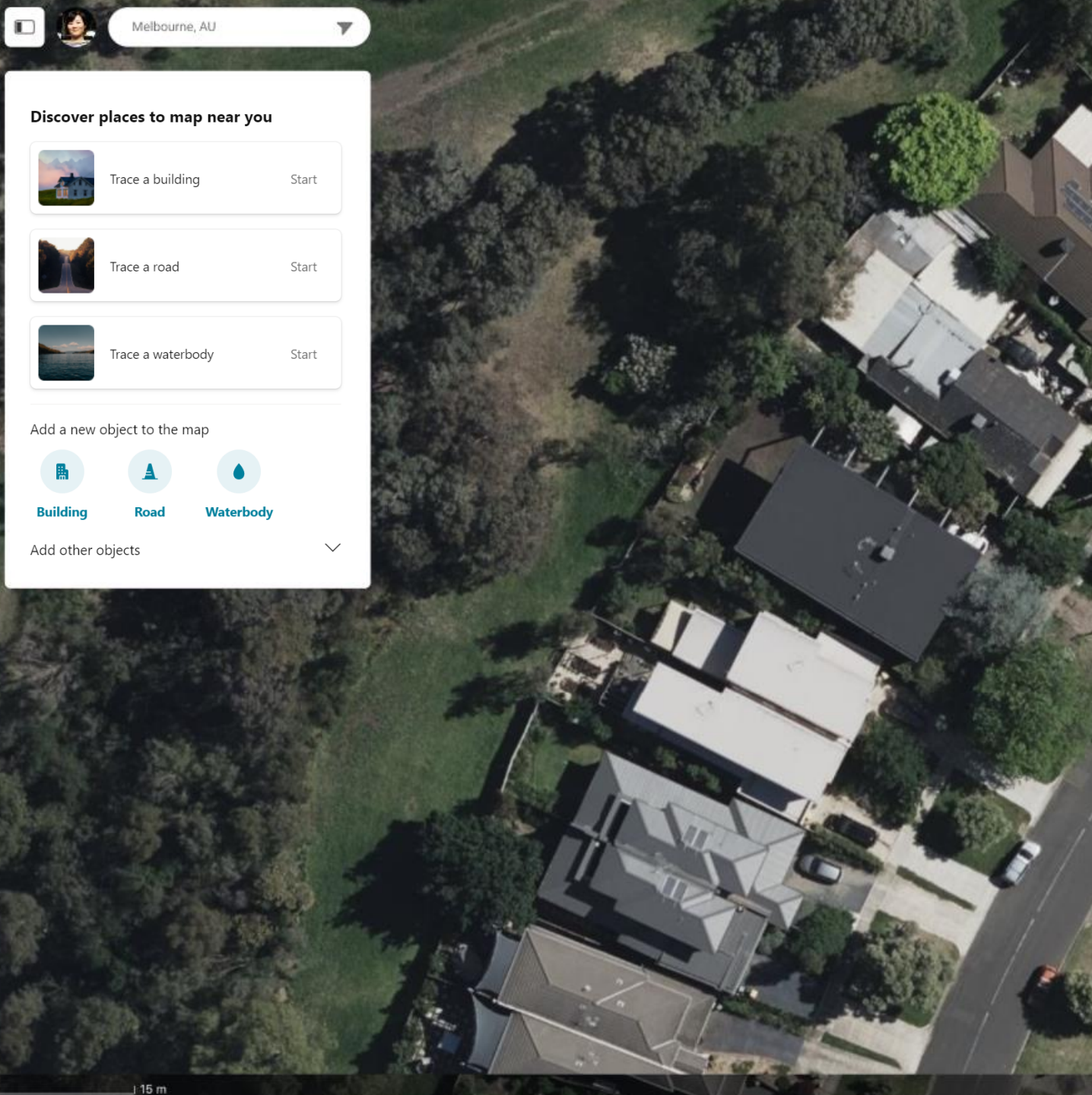
Waterbody

Add other objects



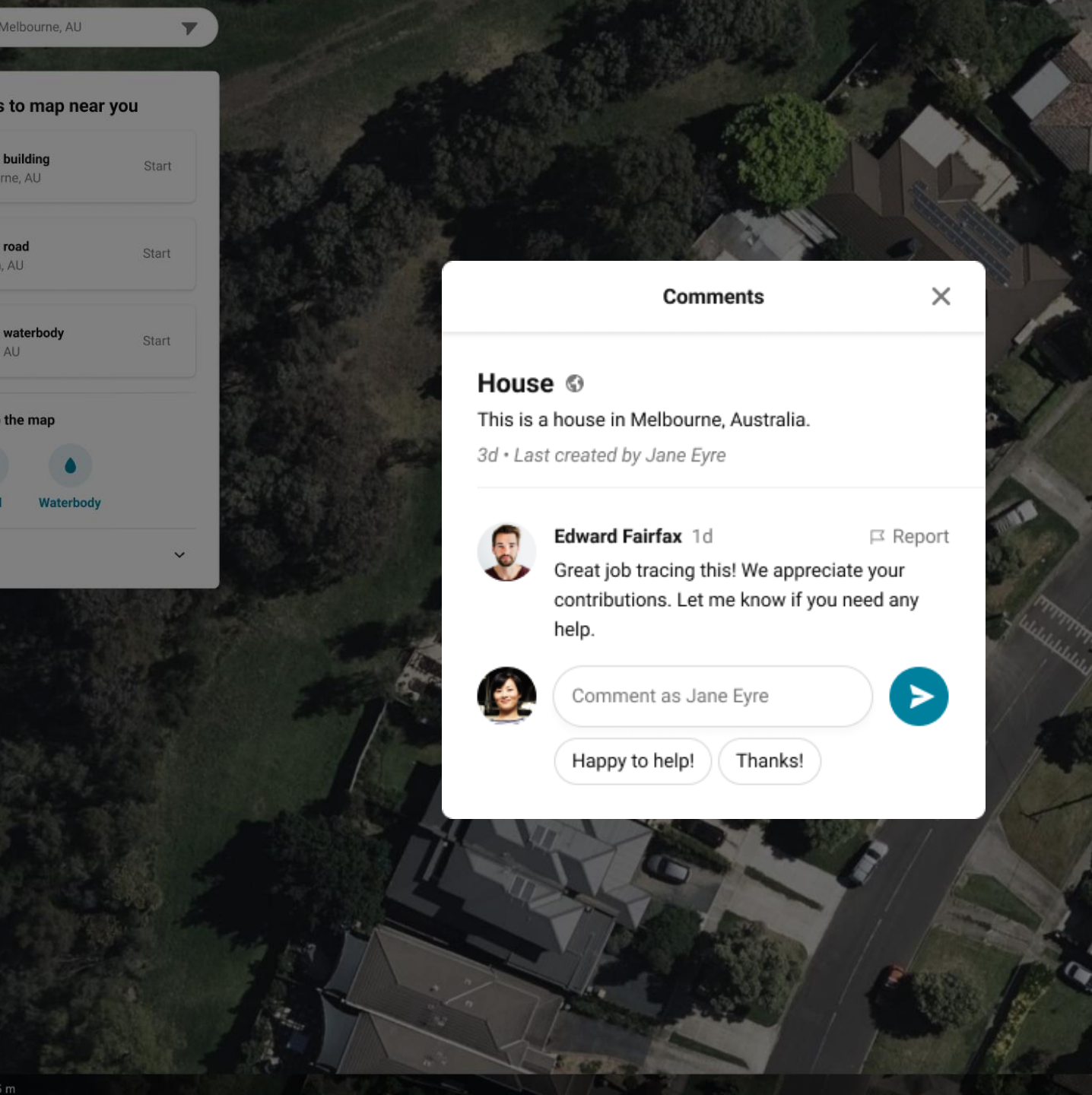
Structured guidance  
helps users  
make quality edits  
quickly and easily





Structured guidance  
helps users  
make quality edits  
quickly and easily





Communication  
features connect Map  
builder users to the  
OSM community



# Summary

- Errors on the map has real impact on everyday users so making the map great is of value to everyone
- We see a huge potential pool of contributors in Microsoft users, if we can make it easy in the ways and places relevant to them
- We are at the beginning of a long journey, help us evolve!



**You can try it out yourself**

<https://aka.ms/mapbuilder>

Please provide feedback via Map builder or [osm@microsoft.com](mailto:osm@microsoft.com)





Thank you





Q&A